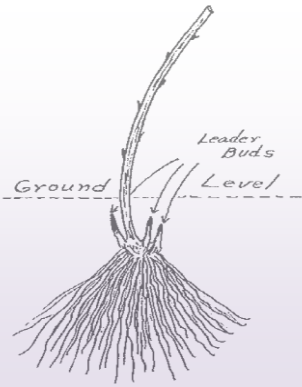


# SUSTAINABLE LIFE-LOCALLY GROWN AT HOME

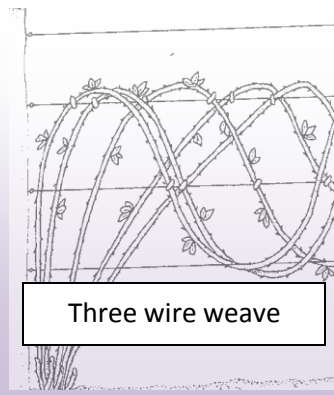
**Planting Instructions:** One year old tip plants should be planted in March or April. Two year old transplants may be planted earlier, one inch deeper than the plant grew in the nursery. Any white sprouts arising from the crown should be covered with soil to prevent burning by the sun. The older stems or tops on transplants may be cut back several inches. Blackberries should be spaced 4-6 feet in the row and 6-8 feet between rows, depending on equipment.



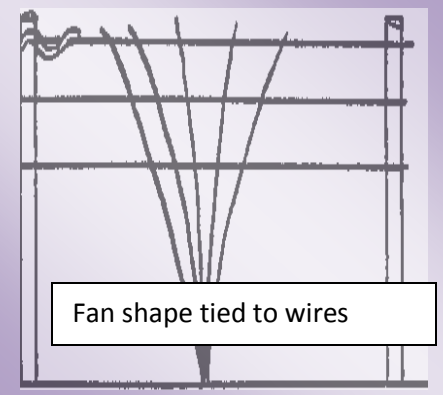
Ready to plant Young plant from the nursery



Plants can be planted along a fence row 4-6 feet apart in the row



Three wire weave

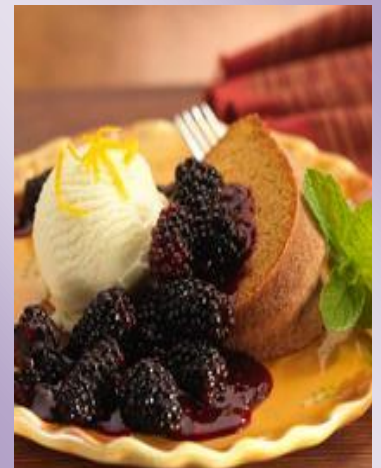


Fan shape tied to wires

Pick a support system for your Blackberry plants that best fits your space and ease of picking the fruit. You can even grow in containers of all sorts



**Harvesting:** You will not get a crop the first season after planting as blackberries set fruit on the second year canes. Blackberries have a long harvest season with the early varieties ripening in July and the Everbearing (Primocane) Blackberries setting fruit until October if the weather holds out. Blackberries are ripe when they are dark purple to black and full in shape and are easy to pick from the plant. Pick in dry weather and harvest regularly to encourage more and longer fruiting. Store the blackberries in a cool, dry location or refrigerate if storing for several days. Use the fresh fruit for fresh eating, syrups and jams. Freeze off the vine for winter use in cobblers, etc.



**Pruning:** Remove the 2 yr. old canes that had berries on them this summer, they will not bear again. Cut the old canes off even with the ground destroy or compost. And then cover the "Crown" where the canes grew from with mulch such as clean straw to protect it from frost. The canes that came up this summer will bear the berries next summer. They must be two years old to bear fruit.

For winter care, you tie to the arbor the canes that came up this summer. Some people make big circles of the canes like you would when coiling a hose, and tie the circles to the arbor. Some people zig-zag them back and forth on the arbor, using big loops on the end so you don't break the cane. Decide what will be easiest for you to pick next summer and use that pattern.

**Handy tips** Use a fruit cage or netting if birds and small mammals are a particular problem.